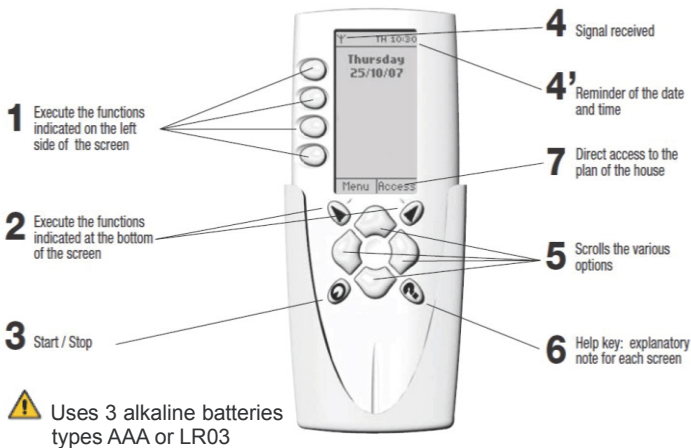


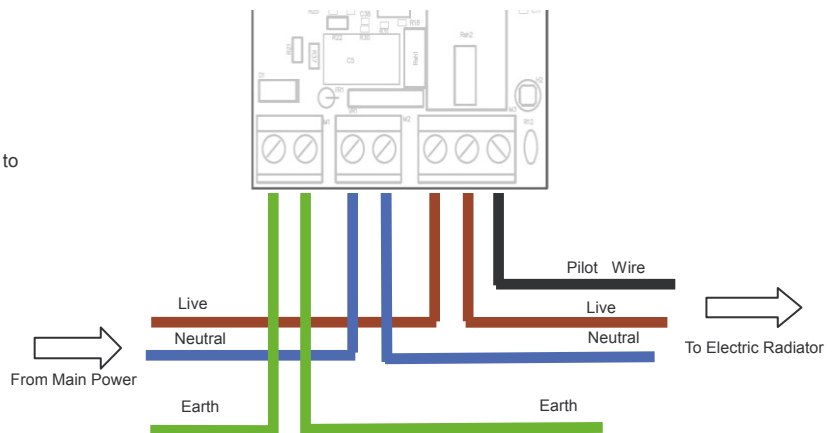
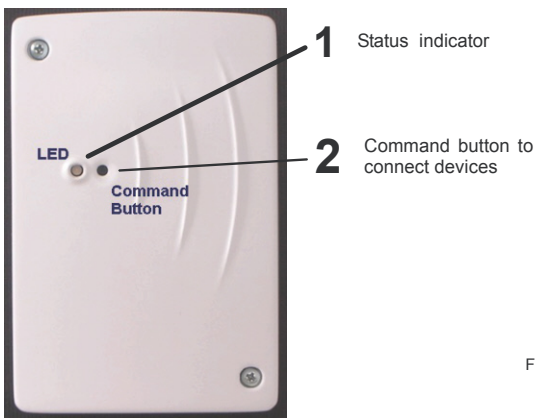
1 Description of the devices

1.1 Wippy: the remote control



1.2 eConv devices

Electrical connections to eConv



Max power:  
16A to 230Vac 3600 Watts

Description of the Status indicator	
No Light	Device connected
Yellow	Device not connected
Yellow Blinking	Connection in progress
Green	Lights for 5 seconds to indicate that there is a connection
Red	Hardware errors (call assistance)

**IMPORTANT**

When installing the system **always** connect and bind the **eConv+ or eSwitch+** with the Wippy first (easily identified as they have a battery). An eConv+ or eSwitch+ is the main communicator, once this is binded with the Wippy, bind each other eConv unit one by one.

**Non compliance will result in system failure.**

Main functions

- Pilot-wire signal generator.
- Power and energy meter.

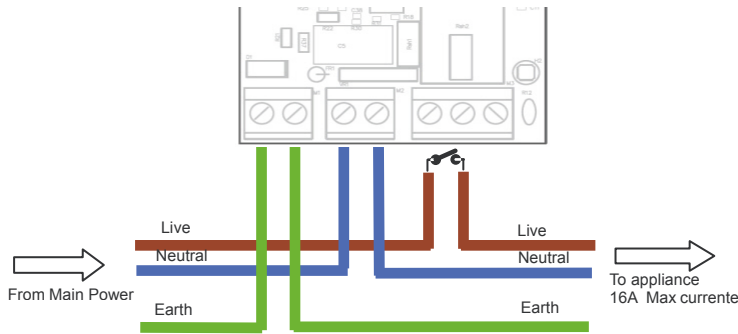
Pilot-wire signal generator.

The eConv device generates the following signals which are shown in the following table.

Mode	Command description	Signal type
COMFORT	No signal	—
COMFORT-1	5 minutes no signal 3 seconds complete alternation	
COMFORT-2	5 minutes no signal 7 seconds complete alternation	
BACKGROUND	Permanent complete alternation	
FROSTPROTECTION	Negative alternation	
STOP	Positive alternation	

### 1.3 eSwitch/ePlug devices

#### Electrical connections to eSwitch



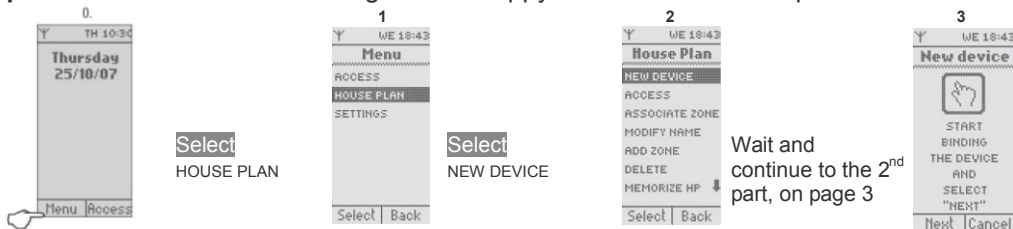
Main functions

- 16A switching max current.
- Power and energy meter (please see section 3.1).

## 2 To connect the devices

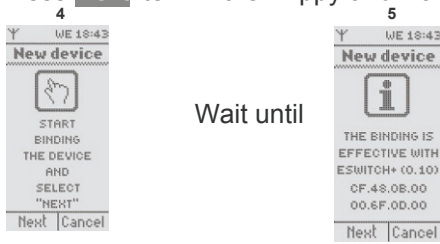
This procedure is the same for the eConv, the eSwitch and the ePlug.

**1<sup>st</sup> part** Start from the Home Page of the Wippy and to follow the sequence below:



2<sup>nd</sup> part On the eConv device (it is the same for the eSwitch and the ePlug devices):

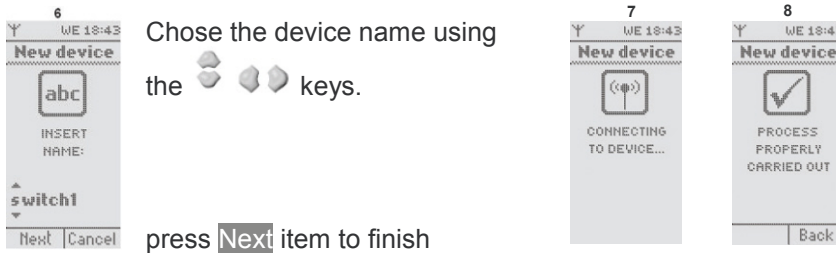
- Press button **2** for three seconds until the yellow light blinks.
- Press **Next** item in the Wippy and wait until the screen example 5 appears as shown below.



Wait until

- By pressing the **Cancel** item you can reset the device: stop the blinking yellow light and after a few seconds it will be ready to connect again.
- Press **Next** item to continue to part 3:

3<sup>rd</sup>.part Setting the device name and to complete the connection.

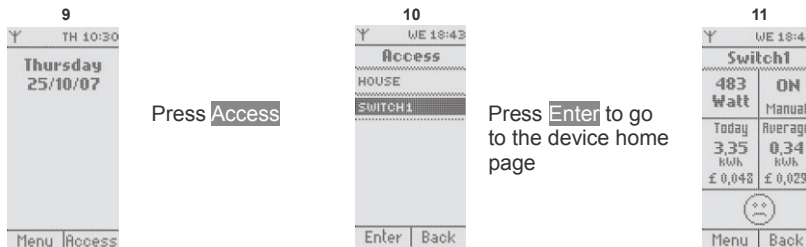


press **Next** item to finish

- When screen example 8 appears as shown above, the connection procedure is finished, you can then press **Back** to return to the House Plan menu.

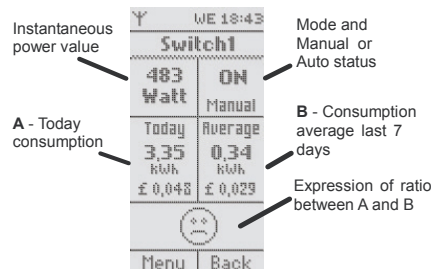
### 3 Use the Wippy

From the main screen 9 go to main screen 11, as exemplated below:



#### 3.1 Main functions

- Select the Mode
- Programming and putting in Auto Mode
- Energy analysis



Mode selection in the eConv device

Menu item		Pilot wire action	
MENU	OFF	Putting in stop state	
	MANUAL	COMFORT	Putting in Comfort mode (the radiators work with their set-point temperature)
		COMFORT-1	Working with their set-point temperature minus 1°C
		COMFORT-2	Working with their set-point temperature minus 2°C
		BACKGROUND	Working with their set-point temperature minus 3,5°C
		FROST PROTECTION	Working to 7°C set-point
	OVERRIDE	Short (Hours)	Putting in Comfort or Background or Frost Protection for a time settable into 24 hours
Long (Days)		Putting in Comfort or Background or Frost Protection for more days	

Mode selection in the eSwitch device

Menu item		Action	
MENU	ON	Switch on the relay	
	OFF	Switch off the relay	
	STAND BY KILLER	Switch off the relay when the appliance is on stand-by and the consumption is below the watt limit upper for a time settable in OTHERS item	
	OVERRIDE	Short (Hours)	Putting in ON or OFF or STAND BY KILLER for a time settable into 24 hours
		Long (Days)	Putting in ON or OFF or STAND BY KILLER for more days

Programming and setting in Auto Mode

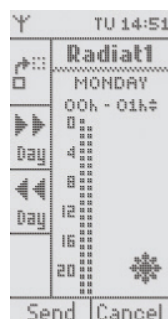
All devices can be set the modes for 24 hours each day every week.

- Set the program and send to the device
- Put in Auto mode to activate the program

Set the program in the eConv.

From the main device screen example 11 select Menu and proceed as follows:

Menu Prog



Set the mode in all hours from 0 to 23



Use to select the mode and to select the hour

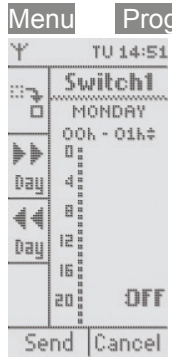
Use Copy & Paste to repeat the daily program for the other days

Use to scroll the days of the week.

Press **Send** to send to device and finish the operation.

Set the program in the **eSwitch**.

From the main device screen (example.11) select Menu and proceed as follows:



Set the mode for all hours from 0 to 23



Use to select the mode and to select the hour

Use Copy & Paste to repeat the daily program for all days

Use Day Day to scroll the days of the week

Press **Send** to send to device and to finish the operation.

Put in Auto mode to activate the weekly program

From the main device screen (example11) select Menu and proceed as follows:

**Menu** **Auto** and to select **Yes** to confirm the Auto mode

**Energy Analyzer**

All devices are power meter and energy data loggers.

- The Power is an instantaneous value shown in the device main page
- The Energy is a range of data view in a graph

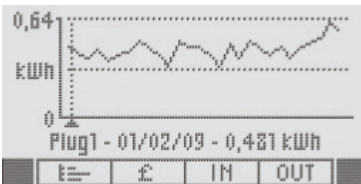


Access to data logger from main devise screen (example 11) select Menu and proceed as follows:

**Menu** **E.Analyze**.

<b>E.ANALYZER</b>	<b>CUSTOM</b>	Choose the data range to view FROMday To day (for a max range of 1 month). Press <b>Draw</b> to show the relative graph.
	<b>TODAY</b>	View the data graph for today.
	<b>YESTERDAY</b>	View the data graph for yesterday.
	<b>LAST WEEK</b>	View the data graph for the last weekfrom Monday to Sunday.
	<b>LAST 7 DAYS</b>	View the data graph for the last 7 days.
	<b>LAST MONTH</b>	View the data graph for the last month from the 1 <sup>st</sup> to the last day.
	<b>LAST YEAR</b>	View the data graph for the last 365 days.

Graph page description:



- Use to scroll the graphs parts (days or hours).
- IN** key to details of the parts day by day and hour by hour.
- OUT** key to come back or to leave the page.
- £** key to view total consumption in kWh and £
- £** key to

2  
2

### 3.2 Working with HOUSE PLAN menu.

From the home page selecting **Menu** shows the HOUSE PLAN

Main functions

- New device connection
- Access to the device network
- Create a zones structure
- Modify the devices name
- Devices delete.
- Memorization and restoration of the network on a SD-Card support.


	Menu item	Action
HOUSE PLAN	NEW DEVICE	Link a new device in the network
	ACCESS	Access to the devices
	ADD ZONE ASSOCIATE ZONE	Create groups of devices with the same commands
	MODIFY NAME	Modify the device name
	DELETE	Delete Zone or Device from network
	MEMORIZE HP RESTORE HP	Before an upgrade

### 3.3 Working with SETTINGS menu.

From the home page selecting **Menu** shows the SETTINGS item.

Main functions:

- Create and delete shortcut keys
- Set most important parameters
- Set the network parameters

	Menu item	Action
SETTINGS	NEW SHORTCUT DELETE SORTCUT	Allows creating 16 direct commands in the main page scrolling with  keys and settable with the 4 keys on the left of the display.
	DATE AND TIME	Set the system date and time.
	SCREEN CONTR.	Set the screen contrast.
	TARIFF	Set the cost per kWh relative to more range types
	POWER LIMIT	Set the maximum watt available in the building
	CURRENCY	
	ADVANCE/BASIC	Set a protection password.
	NETWORK	Set the network parameter (channel from 0 to 15 and ID number from 0 to 1023) before connecting the devices.

## 4 FAQ section

1 Q: Change the Date and Time.

1 A: From main page press **Menu** **Settings** **Date And Time**

2 Q: Setting the tariff

2.A: From main page press **Menu** **Settings** **Tarif**



**IntelliHeat**

Intelligent Heating Solutions.

[www.i-green.co.uk](http://www.i-green.co.uk) - [www.intelligentheat.co.uk](http://www.intelligentheat.co.uk)

INTELLI HEAT LTD Unit 18 Napier Place, Stephenson Way, Thetford, Norfolk IP24 3RL